

STANDARD PC RANGE

PC-SM2 PRODUCT GUIDE

PC-SM2 Surface Mount Male Adhesive Fix - 5kg

The PC-SM2 surface mount male is designed for use with thin walled panels and where installers prefer an adhesive fix. It is ideal for new composite materials. Patented SuperGroove® base mechanically engages into a 2 part epoxy on the base for secure mounting. Compatible with all female clips in the Standard Range, and has a 5kg pull out load. Refer to Panel Offset Guide for information about gap between substrate and panel, pull out and shear loads.

PC-SM2



MATERIAL:

White Acetal copolymer

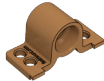
USE WITH:

PC-F1A

PC-RF1

PC-SF1

PC-AF1



MORE INFO:

Installation Guide PC-F1A, SF1, RF1
Clip Layout Guide TD-02, 09, 12
Panel Offset Guide

BENEFITS

- Self-aligning secure mounting (5kg per clip)
- Installation requires no special tools or skilled labour
- Use a 2 part epoxy
- No drilling of panels, fast installation
- Works with existing Fastmount clips
- Allows for flexing and expansion of panel and support frame

APPLICATIONS

- Mounting thin walled panels less than 6mm thick
- Soft or honeycomb cored panels with thin facings
- Mounting panels where no drilling is preferred
- Ideal for refit

INSTALLATION: Partially exploded through section showing typical installation method

